

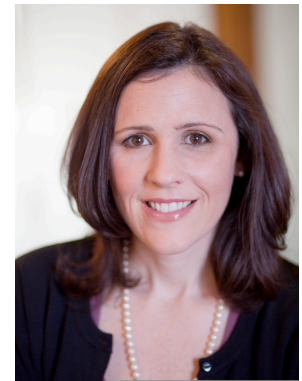
BRNET August Newsletter

Dear BRNET Members:

Thank you for being a part of the Bullying Research Network. Below you will find updates from our network. Be sure to check our website at <http://brnet.unl.edu>.

Researcher Spotlight – Dr. Catherine Bradshaw

Catherine Bradshaw, Ph.D., M.Ed., is a developmental psychologist and youth violence prevention researcher. She holds a doctorate in developmental psychology from Cornell University and a master's in counseling and guidance from the University of Georgia. She is an Associate Professor in the Department of Mental Health at the Johns Hopkins Bloomberg School of Public Health and has a joint appointment in the School of Education at Johns Hopkins University. She is the Deputy Director of the CDC-funded Johns Hopkins Center for the Prevention of Youth Violence and is the Co-Director of the NIMH-funded Johns Hopkins Center for Prevention and Early Intervention.



Her research focuses on topics related to the development of aggressive and problem behavior and school-based prevention. She conducts research on bullying and school climate; the development of aggressive and problem behaviors; effects of family and environmental stress on children; and the design, implementation, and evaluation of evidence-based prevention programs in schools. She presently collaborates on four federally funded randomized trials of school-based prevention programs, including Positive Behavioral Interventions and Supports (PBIS) and social-emotional learning curricula. Catherine also works with the Maryland State Department of Education and several school districts and national organizations to support the development and implementation of programs and policies to prevent bullying and school violence, and to foster safe and supportive learning environments. She is the Associate Editor of the *Journal of Research on Adolescence* and is currently co-editing a second edition of the *Handbook of School Mental Health: Advancing Practice and Research* (Springer). She has served on several expert panels on bullying, including the 2011 White House Summit on Bullying. She collaborates on federally-funded research grants supported by the NIMH, NIDA, CDC, U.S. Department of Education, and the Institute of Education Sciences.

Recent Projects

Dr. Bradshaw has been leading a series of projects focused on the association between bullying and school climate, and effective prevention approaches. One nation-wide project was conducted in collaboration with the National Education Association and examined factors contributing to staff members' willingness and preparedness to intervene in bullying situations. A related set of studies resulted in the creation of a state-wide system for assessing bullying, which is administered annually to over 25,000 students, 2,500 staff members, and 1,000 parents. This line of research has resulted in several publications, including two

papers (with Tracy Waasdorp) in the *Journal of Educational Psychology* (2011) examining parent and student responses to bullying. In July 2012, she co-edited (with Terri Sullivan) a special issue of *Behavioral Disorders* focused on children with disabilities who are involved in bullying and youth violence. She recently published a series of papers in *Pediatrics* and *Archives of Pediatrics and Adolescent Medicine* based on findings from a 37 school randomized controlled trial of PBIS, demonstrating significant impacts on bullying, peer rejection, aggressive behavior, concentration problems, emotion regulation, and prosocial behavior. She is currently a PI on a 58 high school randomized controlled trial of PBIS which integrates bullying prevention and substance abuse prevention programming. The trial examines issues related to bullying, school climate, and safety, and includes a comprehensive observational data collection effort funded by the William T. Grant Foundation.

BRNET Welcomes Two New Members!

BRNET is happy to welcome Drs. David Finkelhor and Wendy Troop-Gordon this month. Please see below for their brief biographies.

David Finkelhor, Ph.D. - University of New Hampshire

David Finkelhor is Director of Crimes against Children Research Center, Co-Director of the Family Research Laboratory, Professor of Sociology, and University Professor, at the University of New Hampshire. He has been studying the problems of child victimization, child maltreatment and family violence since 1977. He is well known for his conceptual and empirical work on the problem of child sexual abuse, reflected in publications such as Sourcebook on Child Sexual Abuse (Sage, 1986) and Nursery Crimes (Sage, 1988). He has also written about child homicide, missing and abducted children, children exposed to domestic and peer violence and other forms of family violence. In his recent work, for example, his book, Child Victimization (Oxford University Press, 2008), he has tried to unify and integrate knowledge about all the diverse forms of child victimization in a field he has termed Developmental Victimology. This book received the Daniel Schneider Child Welfare Book of the Year award in 2009. All together, he is editor and author of 12 books and over 200 journal articles and book chapters. He has received grants from the National Institute of Mental Health, the National Center on Child Abuse and Neglect, and the US Department of Justice, and a variety of other sources. In 1994, he was given the Distinguished Child Abuse Professional Award by the American Professional Society on the Abuse of Children, in 2004 he was given the Significant Achievement Award from the Association for the Treatment of Sexual Abusers, in 2005 he and his colleagues received the Child Maltreatment Article of the Year award, and in 2007 he was elected as a Fellow of the American Society of Criminology.

Wendy Troop-Gordon, Ph.D. - North Dakota State University

Wendy Troop-Gordon, Ph.D., is an Assistant Professor of psychology at North Dakota State University. Her research interests include the processes that link being the victim of bullying to later mental health and school adjustment and those factors that may mitigate, or heighten, the risk of maladjustment among peer victimized youth, including individual differences in social cognition, stress responses and coping strategies, interpersonal relationships with peers and adults, and features of the classroom context. Most recently, she has begun using eye tracking to study how differences in visual attention patterns to social cues moderate the link between being bullied and externalizing and internalizing problems. In a second line of research, Dr. Troop-Gordon has been studying the social cognitive and interpersonal processes linking high social status among peers to aggression and enhanced emotional well-being.

Invitation to Submit for Systemic Trauma: Special Issues of *Journal of Trauma & Dissociation*

Manuscript submissions are encouraged for an upcoming special issue of the *Journal of Trauma and Dissociation* on "Systemic Trauma." Manuscripts are due December 1, 2012. The full call is appended below, and can be accessed at <http://dynamic.uoregon.edu/~jjf/jtd/systemic.html>.

Questions can be directed to the guest editors at jtdsystemic@dynamic.uoregon.edu.

Systemic Trauma

Special Issue of the *Journal of Trauma & Dissociation*

Special Issue Guest Editors: Rachel E. Goldsmith, Ph.D., Christina Gamache Martin, M.S., and Carly Smith, M.A., M.S.

Email for guest editors: jtdsystemic@dynamic.uoregon.edu

Substantial theoretical, empirical, and clinical work examines trauma as it relates to individual victims and perpetrators. Fewer investigations address the broader contexts that give rise to trauma, maintain it, and impact responses. This issue of JTD will expand upon this emerging literature to explore facets of institutions, cultures, and communities that contribute to trauma and outcomes such as public perceptions, legal and financial consequences, and psychological and physical health. We are seeking articles on topics including, but not limited to, trauma involving institutions such as schools and universities, churches and other religious institutions, the military, work environments, hospitals, jails and prisons; agencies such as police, foster care, immigration, federal assistance, disaster management, and the media; conflicts involving war, torture, terrorism and refugees; dynamics of racism, sexism, discrimination, bullying, and homophobia; and issues pertaining to measurement, methodology, advocacy, and intervention. Views that integrate frameworks outside of psychology are encouraged as we work to broaden our understanding of trauma to include phenomena such as coercion, secrecy, normalizing the status quo, and misinformation that often occur at a systemic level. Empirical papers and papers of clinical significance are encouraged, and will be peer-reviewed.

Manuscripts should be 1500-5500 words. For more instructions, see Submission Instructions for Authors

Inquiries and submissions should be sent to the special issue editors at jtdsystemic@dynamic.uoregon.edu. You are welcome to submit a draft abstract or synopsis of a potential paper. We will do our best to provide constructive feedback.

Deadline:

Submit papers for the special issue to jtdsystemic@dynamic.uoregon.edu by December 1, 2012. Receipt of papers will be acknowledged by email.

For more information about the *Journal of Trauma & Dissociation*, see:

<http://dynamic.uoregon.edu/~jjf/jtd/>. Submissions related to trauma and dissociation are welcome at any time. Submission of papers for the regular issues of JTD should be submitted online at <http://mc.manuscriptcentral.com/wjtd> whereas submission for the special issue should be sent by email to jtdsystemic@dynamic.uoregon.edu.

Postdoc Position at the "Lendület" Research Center for Educational and Network Studies (RECENS)

RECENS is a research center led by Károly Takács, promoting high quality research in social network analysis. RECENS is part of Centre for Social Sciences, Hungarian Academy of Sciences and is located in Budapest, Hungary in the beautiful Buda castle.

We are seeking a candidate who will participate in our research project "Competition and Negative Networks: The Origin, Dynamics, and Harmful Consequences of Negative Relations." The overall project proposal is accessible <http://www.recensproject.hu/eng>.

The ideal candidate should have one of the following profiles:

A strong analytical background and expertise in agent based simulation to study network dynamics or - a background and experience in advanced social network analysis, and familiarity with ERGM models. The selected candidate will have no teaching obligations and can devote all of his or her time on research activities. The job is renewable to a researcher position upon a successful evaluation that will particularly consider the record of publications in international journals. Applicants should send a CV and a sample paper no later than 24, August, 2012 to titkarsag@tk.mta.hu.

For more information, please contact Borbala Schenk, Secretariat of the General Director, Centre for Social Sciences, Hungarian Academy of Sciences at titkarsag@tk.mta.hu

This post is available for a period of two or three years commencing 1, September, 2012 or as soon as possible thereafter.

Closing date: 24 August, 2012

Review of European Studies: Call for Papers

The *Review of European Studies* Journal at Canadian Center of Science and Education involves in subjects of Culture, History, Sociology, Politics, Laws, Education, Psychology and Economics. It's our honor to invite you to contribute manuscripts to our journal.

Please find the journal's profile at: <http://www.ccsenet.org/res/> and submit your manuscripts online. Or you can send your paper directly to the following e-mail: res@ccsenet.org

Note: The journal is also recruiting reviewers. Please find more details at: <http://ccsenet.org/web/reviewer.html>

Best Regards,

Paige Dou, Editor

Late-Breaking News!

Several BRNET members were at the annual conference of the American Psychological Association in

Orlando, Florida last week. Sue met with Dr. Jane Close Conoley, Dean of the Gevirtz Graduate School of Education at the University of California, Santa Barbara. We are pleased to announce that UCSB will host the 3rd annual BRNET Think Tank in June 2013 in sunny Santa Barbara! BRNET members, Dr. Mike Furlong and Dr. Shane Jimerson will help coordinate the BRNET Think Tank, which has become a very productive and rewarding meeting. We extend our heart-felt “thank you!” to Jane, Mike, and Shane for hosting our next BRNET Think Tank. Stay tuned for a save-the-date announcement, but plan on joining us in late June 2013 in Santa Barbara, CA.

Thank you for your involvement in the Bullying Research Network! If you have any news, information, research, suggestions for new members, or other materials that our members would find useful, please do not hesitate to email us at bullyresearchnet@gmail.com

Most sincerely,



Dr. Shelley Hymel
University of British Columbia
BRNET Co-Director



Dr. Susan Swearer
University of Nebraska - Lincoln
BRNET Co-Director