



## BRNET April 2014 Newsletter

### Dear BRNET Members:

Thank you for being a part of the Bullying Research Network! Below you will find updates from our network. Be sure to check our website at <http://brnet.unl.edu> for more information as well.

---

### 2014 BRNET-PREVNet Think Tank

*PLEASE SEE THE THINK TANK FLYER IN THE APPENDIX*

**REGISTER NOW** for the next BRNET Think Tank, June 24 and 25, 2014 at the University of British Columbia in Vancouver, BC, hosted by BRNET and PREVNet ([www.prevnet.ca](http://www.prevnet.ca)), a Canadian national organization that addresses bullying. Scholars interested in participating in the Think Tank will need to register (via email) to [2014thinktank@gmail.com](mailto:2014thinktank@gmail.com) on or before May 10<sup>th</sup>.

---

### Researcher Spotlight – Dr. Marion Underwood

Marion Underwood's scholarly interests lie within the broad domains of children's anger and aggression, peer relations, digital communication, and developmental psychopathology. She earned her doctoral degree from Duke University in child clinical psychology in 1991 under the mentorship of Dr. John Coie, who taught her a great deal about why children fight and how to help them. She joined the faculty and was granted tenure at Reed College in Portland, Oregon. In September of 1998, Dr. Underwood joined the School of Behavioral and Brain Sciences at the University of Texas at Dallas, where she was named as an Ashbel Smith Professor in 2008. Since August of 2013, Dr. Underwood has served as the Associate Dean for Programs and Administration in the School of Behavioral and Brain Sciences. She is grateful to have had research support from the National Institutes of Health since 1995.

When children and adolescents want to express anger and contempt toward peers, they sometimes aggress physically but also hurt others by friendship manipulation, social exclusion, and negative gossip or backstabbing. These behaviors are called social aggression, and their purpose is to harm others by damaging their social status and close relationships (Underwood, 2003). A large longitudinal study in progress is investigating the origins and outcomes of social and physical aggression. Recent papers have presented developmental trajectories for social aggression and victimization from grades 3 – 12 (Ehrenreich, Beron, Brinkley, & Underwood, in press), family factors that predict following different trajectories (Ehrenreich et al., in press; Underwood et al., 2008), and psychosocial outcomes associated with membership in trajectory groups (Underwood et al., 2011).

Recently Dr. Underwood has begun investigating adolescents' digital communication. Students in the ongoing longitudinal study of social aggression have been provided with handheld devices configured to capture the content of their text messaging, Instant Messaging, and email communication throughout

their four years of high school (Underwood et al, 2012). In the Summer of 2012, we also began capturing the content of participants' Facebook communication, which will allow us to examine how Facebook activity relates to qualities of relationships and adjustment as adolescents make the transition beyond high school. This study will also be the first large-scale, longitudinal investigation to examine the actual content of adolescents' digital communication and the extent to which they engage in social aggression as well as other forms of communication with peers, parents, romantic partners, and even strangers; thus, these results could guide policy decisions about adolescents' access to digital devices and online communication. Results to date show that although the vast majority of text messaging is positive or neutral, texting about negative content relates to increases in internalizing symptoms (Underwood et al., in press) and texting about antisocial activities predicts growth in aggression and rule breaking across the ninth grade year (Ehrenreich et al., in press).

Dr. Underwood regularly speaks to professional and community groups about her research. She offers two presentations: *Social Aggression among Children: What Parents and Educators Can Do to Reduce Bullying* and *Helping Adolescents Use Digital Communication for Good*.

#### References (students' names appear in italics)

*Ehrenreich, S.E., Beron, K.J., Brinkley, D.Y., & Underwood, M.K.* (in press). Family predictors of continuity and change in social and physical aggression from ages 9- 18.

*Ehrenreich, S.E., Underwood, M.K., & Ackerman, R.* (in press). Adolescents' text message communication and growth in antisocial behavior across the first year of high school. *Journal of Abnormal Child Psychology*.

Underwood, M.K., Beron, K.J., & *Rosen, L.H.* (2011). Joint trajectories for social and physical aggression as predictors of adolescent maladjustment: Internalizing symptoms, rule-breaking behaviors, and borderline and narcissistic personality features. *Development and Psychopathology, 23*, 659-678.

Underwood, M.K., Beron, K.J., *Gentsch, J.K., Galperin, M.B. & Risser, S. D.* (2008). Interparental conflict resolution strategies, parenting styles, and children's social and physical aggression with peers. *International Journal of Behavioral Development, 32*, 566-579.

Underwood, M.K., *Ehrenreich, S.E., More, D., Solis, J.S., & Brinkley, D.Y.* (in press). The BlackBerry Project: The hidden world of adolescents' text messaging and relations with internalizing symptoms. *Journal of Research on Adolescence*.

Underwood, M.K., *Rosen, L.H., More, D., Ehrenreich, S., & Gentsch, J.K.* (2012). The BlackBerry Project: Capturing the content of adolescents' electronic communication. *Developmental Psychology, 48*, 295-302.

---

### **BRNET New Members!**

BRNET has a current total of 153 members! One new member has joined this past month. Welcome to BRNET, Dr. Zopito Marini!

### **Zopito Marini, PhD – Brock University**

Dr. Zopito A. Marini's webpage and biography can be found here: <http://www.brocku.ca/zmarini>. Dr. Marini and his team (his students along with a number of colleagues) are pursuing a research program dedicated to understanding bullying and victimization by examining a number of interrelated issues,

including: 1) An investigation of the fundamental nature of bullying, its subtypes, definition, and normal heterogeneity (including incivility, cyberbullying and bully/victims), 2) Maladaptive and adaptive explanations of bullying grounded in a frameworks that encompasses individual, ecological, and evolutionary perspectives (including sexual behaviour, cost/benefits analysis, and resource acquisitions), and 3) Biopsychosocial factors that mediate or moderate bullying involvement (including temperament and personality, parenting practices, self-esteem, and other factors).

Please send recommendations for potential BRNET members (i.e., faculty, researchers, and clinicians who are conducting research on bullying or related topics) to Dr. Shelley Hymel, Dr. Susan Swearer, or to [bullyresearchnet@gmail.com](mailto:bullyresearchnet@gmail.com).

*If you have recently joined BRNET and have not yet provided your information, please send the following to [bullyresearchnet@gmail.com](mailto:bullyresearchnet@gmail.com).*

- 1) contact information that can be posted on the website,
- 2) a brief biography of you and your work,
- 3) a list of current/ongoing projects in this area,
- 4) an annotated bibliography of your work in this area (i.e., full reference plus a few sentences about the work), and,
- 5) relevant web-based links you would like to share.

---

### **BRNET Member Grant/Funding Announcements**

Receipt of funding facilitates the BRNET mission to conduct interdisciplinary research related to bullying and aggression, with particular attention being paid to the link between basic and applied research. Thus, the BRNET directors are excited to offer members a new opportunity to share grants (and other sources of funding) they have received for their research projects.

Funding varies across countries and is not limited to federal grants. If you are interested in sharing your grants or funding with other BRNET members, please send an abstract of the research funding along with the funding source to [bullyresearchnet@gmail.com](mailto:bullyresearchnet@gmail.com).

---

### **New Study on Social Status and Bullying**

Please see the below citation and abstract for a new longitudinal study that examines the consequences of socially vulnerable youth and those higher on the school hierarchy:

Faris, R. & Felmlee, D. (2014). Casualties of social combat: School networks of peer victimization and their consequences. *American Sociological Review*, 79, 228-257. doi: 10.1177/0003122414524573

#### **Abstract:**

We point to group processes of status conflict and norm enforcement as fundamental elements in the development of school-based victimization. Socially vulnerable youth are frequently harassed for violating norms, but the logic of status competition implies they are not the only victims: to the extent that aggression is instrumental for social climbing, increases in status should increase risk—at least until the pinnacle of the hierarchy is reached. Victimization causes serious harm, and, we argue, at the margin these consequences will be magnified by status. We test these ideas using longitudinal network data on friendship and victimization from 19 schools. For most students, status increases the risk of victimization. However, youth at the uppermost extremes of the school hierarchy—students in the top 5 percent of

centrality and those with cross-gender friendships where such friendships are rare—sit just above the fray, unlikely to fall victim to their peers. As expected, females and physically or socially vulnerable youth are victimized at particularly high rates. Victims experience psychological distress and social marginalization, and these adverse effects are magnified by status. For most students, gains in status increase the likelihood of victimization and the severity of its consequences.

<http://www.asanet.org/journals/ASR/Apr14ASRFeature.pdf>

---

### **H.E.A.R. Training at Harvard**

The third H.E.A.R. (Helping Everyone Achieve Respect) Train-the-Trainer Workshop will be taking place on April 29-30<sup>th</sup> on the campus of Harvard Graduate School of Education in Cambridge, MA. Please see the below link for additional information.

<http://www.project-hear.us/news/articles/5>

---

### **Extended Call for Editorship Applications for the *Journal of School Violence***

Routledge Journals invites nominations and applications for the position of Editor for the rapidly growing scholarly journal *Journal of School Violence*.

Please send replies to Routledge staff at: [Barton.Dudlick@TaylorandFrancis.com](mailto:Barton.Dudlick@TaylorandFrancis.com)

#### TO APPLY

A complete application package will include:

- A curriculum vitae of the candidate
- Statement of interest in the position stating a vision for continued expansion of the publication
- Upon nomination as Editor, a letter of support from the candidates' home institution to act as Editor of *Journal of School Violence*

#### TO NOMINATE A COLLEAGUE

If you would like to nominate someone to be considered for the editorship of *Journal of School Violence*, please send the name of the person you are nominating, his or her email address, and brief description of qualifications to Routledge Journals staff at: [Barton.Dudlick@TaylorandFrancis.com](mailto:Barton.Dudlick@TaylorandFrancis.com)

#### ABOUT THE JOURNAL

The *Journal of School Violence* offers tested information on such urgent matters as threat assessment, hostage situations, stalking behavior, and teacher safety. For longer-range strategic planning, it features articles on social policy, staff training, and international and cross-cultural studies. This peer-reviewed journal helps administrators and policymakers plan effectively to ensure school security by considering issues of administration, assessment, and funding. Drawing on the expertise of eminent researchers and educational leaders worldwide, the *Journal of School Violence* features information derived from a variety of academic disciplines, including psychology, sociology, criminology, theology, education, political science, and the arts.

For more information on the journal, visit the journal webpage at: [www.tandfonline.com/WJSV](http://www.tandfonline.com/WJSV)

*Journal of School Violence*

Volume 13, 2014

Print ISSN: 1538-8220

Online ISSN: 1538-8239

4 Issues per year

[www.tandfonline.com/WJSV](http://www.tandfonline.com/WJSV)

Taylor & Francis imprints

<http://tandf.msgfocus.com/c/13nve0EMAUJbcPTpIoMnqWu0d1>

Sign up by subject area

<http://tandf.msgfocus.com/c/13nve4E7VVswHNS9UgILMFsCiC> to receive news and offers straight to your inbox from the Taylor & Francis Group.

We respect your privacy and will not disclose, rent or sell your email address to any outside organisations. Taylor & Francis is a trading name of Informa UK Limited, registered in England under no. 1072954. Registered office: Mortimer House, 37-41 Mortimer Street, London, W1T 3JH.

---

## **Member Announcements**

### *International Cyberbullying Conference*

There will be an international cyberbullying conference in Gothenburg, Sweden on May 11-12, 2014. See the link below for information about the conference, speakers, program, and registration:

<http://www.cyberbullying.se/eng/>

*Thank you to Dr. Robert Thornberg for sharing this announcement!*

---

Thank you for your involvement in the Bullying Research Network! If you have any news, information, research, suggestions for new members, or other materials that our members would find useful, please do not hesitate to email us at [bullyresearchnet@gmail.com](mailto:bullyresearchnet@gmail.com)

Most sincerely,



Dr. Shelley Hymel  
University of British Columbia  
BRNET Co-Director



Dr. Susan Swearer  
University of Nebraska - Lincoln  
BRNET Co-Director

T H E 4<sup>T H</sup> A N N U A L

# Think Tank 2014

We are pleased to invite you to join us on the beautiful West Coast for the 4<sup>th</sup> Annual Think Tank on Bullying. This event is co-sponsored by the Bullying Research Network (BRNet) and the Promoting Relationships and Eliminating Violence Network (PREVNet). BRNet promotes and assists international collaboration among bullying and peer victimization researchers. PREVNet is a national network of researchers and organizations who work together to stop bullying in Canada. Please join us for this opportunity to collaborate, discuss new ideas and challenge one another.

Scholars interested in participating in the Think Tank will need to register (via email) to [2014thinktank@gmail.com](mailto:2014thinktank@gmail.com) by **May 10**. Participants are expected to cover their own travel and accommodation costs, but participation in the event is free (including food and dinner cruise). In this package, you will find information about the Think Tank schedule, directions, things to do at UBC, attractions in Vancouver and accommodations. The 4<sup>th</sup> Annual Think Tank event will bring researchers from across North America and beyond to engage in discussions about bullying, with a focus on two areas: Bullying and mental health and Bullying across the lifespan.

## Think Tank Schedule

### History

In previous years, the following topics have been the focus of the Think Tank conference:

- **2011:** Bullying Online & at School
- **2012:** New Directions for Positive Youth Development
- **2013:** International Insights to Address Bullying
- **2014:** Bullying and Mental Health & Bullying Across the Lifespan



Prepared by Sarah Joose & Lindsay Starosta

### Day 1: June 24<sup>th</sup>

8:30-9:30am	<ul style="list-style-type: none"><li>• Welcome!</li><li>• Registration</li><li>• Full catered breakfast</li></ul>
9:30-10:45am	<ul style="list-style-type: none"><li>• Introductions</li><li>• Discussion</li></ul>
10:45-11:00am	<ul style="list-style-type: none"><li>• Morning snack break</li></ul>
11:00-12:30pm	<ul style="list-style-type: none"><li>• Discussion</li></ul>
12:30-1:30pm	<ul style="list-style-type: none"><li>• Catered lunch</li></ul>
3:00-3:15pm	<ul style="list-style-type: none"><li>• Afternoon refreshments</li></ul>
3:15-4:00pm	<ul style="list-style-type: none"><li>• Discussion</li></ul>
5:00-9:30pm	<ul style="list-style-type: none"><li>• Sunset dinner cruise around the Vancouver Harbour</li></ul>

### Day 2: June 25<sup>th</sup>

8:30-9:30am	<ul style="list-style-type: none"><li>• Welcome!</li><li>• Sign in</li><li>• Full catered breakfast</li></ul>
9:30-10:45am	<ul style="list-style-type: none"><li>• Discussion</li></ul>
10:45-11:00am	<ul style="list-style-type: none"><li>• Morning snack break</li></ul>
11:00-12:30pm	<ul style="list-style-type: none"><li>• Discussion</li></ul>
12:30-1:30pm	<ul style="list-style-type: none"><li>• Catered lunch</li></ul>
3:00-3:15pm	<ul style="list-style-type: none"><li>• Afternoon refreshments</li></ul>
3:15-4:00pm	<ul style="list-style-type: none"><li>• Wrap up</li></ul>



# The Venue

## Cecil Green Park House

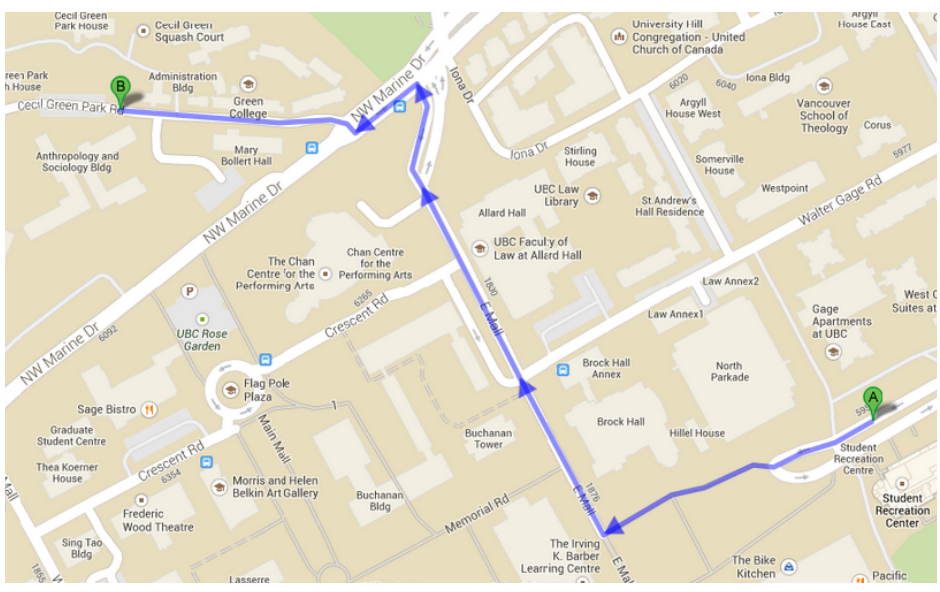
University of British Columbia  
6251 Cecil Green Park Road

*“Situated on the northwest corner of the University of British Columbia, Cecil Green Park House is an elegant mansion boasting scenic views of the mountains and seas that spectacularly frame Vancouver.”*



### Walking Directions: Gage One Bedroom Suites to Cecil Green Park House

- A** Gage One Bedroom Suites
- 1. Head **northwest** toward **Walter Gage Rd** 98m
- 2. Turn left onto **Walter Gage Rd** 200m
- 3. Turn right onto **E Mall N** 160m
- 4. Slight right onto **E Mall S** 83m
- 5. Turn left onto **NW Marine Dr** 60m
- 6. Turn right onto **Cecil Green Park Rd** 140m
- 7. Turn right  
Destination will be on the right 100m
- B** Cecil Green Park House



# Attractions at UBC

## Museum of Anthropology

Visit the world-renowned Museum of Anthropology (MOA), which is situated very close to Cecil Green Park House. Known for its collections, research, teaching, public programs and community connections, it is worth the visit. Admire the Great Hall with totem poles, house posts and carved figures from Northwest Coast nations.



## UBC Botanical Garden and Nitobe Memorial Garden

Spend some time in nature at one of UBC's spectacular gardens featuring unique plant displays from around the world. If you are feeling adventurous, try the Greenheart Canopy Walkway eco-adventure at the botanical gardens and walk high above the ground from tree to tree.

## Beaty Biodiversity Museum

View over 500 exhibits and admire the 26-metre-long blue whale skeleton suspended in the atrium, the third-largest fish collection in Canada, along with endless other fascinating biological collections.



## Morris and Helen Belkin Art Gallery

Visit the art gallery that is international recognized for its exhibitions and programs on contemporary art. Known for its Canadian avant-garde art of the 1960s and 1970s especially. Admission is free and tours are available.

## Irving K. Barber Learning Centre

The Learning Centre features contemporary artworks, a dazzling chandelier by John Nutter, and the Chung Collection. If you're looking for a place to read and relax, you may want to check out Ike's Café.



# Attractions In and Around Vancouver

- Stanley Park: <http://vancouver.ca/parks-recreation-culture/stanley-park.aspx>
- Vancouver Aquarium: <http://www.vanaqua.org/>
- Capilano Suspension Bridge: <http://www.capbridge.com/>
- Vancouver Lookout: <http://www.capbridge.com/>
- Science World: <http://www.scienceworld.ca/>
- VanDusen Botanical Gardens: <http://vandusengarden.org/>
- Granville Island: <http://granvilleisland.com/>
- Vancouver Art Gallery: <http://www.vanartgallery.bc.ca/>
- Grouse Mountain: <http://www.grousemountain.com/>
- Deep Cove: <http://www.deepcovebc.com/>





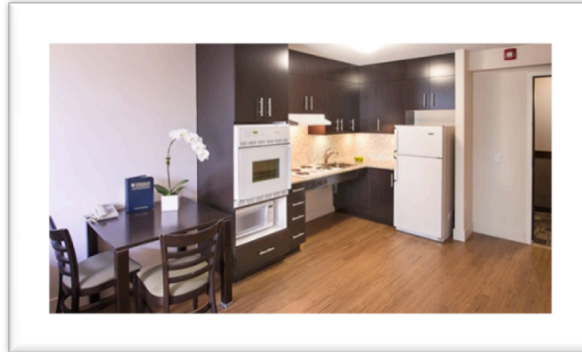
# Accommodations

## Walter Gage One Bedroom Suites

5959 Student Union Boulevard, Vancouver, BC V6T 1K2



- Located on UBC campus
- 15 minute walk to Cecil Park Green House
- A contemporary, beautifully appointed one-bedroom hotel suite featuring: a queen bed in bedroom, pull-out Queen sofa bed in living room, telephone, flat screen TV, private washroom and fully-equipped kitchen



**Cost:** \$149/ night

**Check-in time:** 3pm

**Check-out time:** 11am

**To book a room follow this booking link:**

<https://reserve.ubcconferences.com/GROUP/availability.asp?hotelCode=UBC&sd1=Check+In&startDate=06%2F23%2F2014&ed1=Check+Out&endDate=06%2F25%2F2014&adults=1&children=&rooms=1&requesttype=invBlockCode&code=G140623A>

**Or call: [1 888 822 1030](tel:18888221030) and inform the staff that you are guests of BRNet - PREVNet Think Tank 2014**

**We look forward to seeing you in Vancouver for the 4<sup>th</sup> Annual Think Tank!**

**Should you have any questions, please feel free to contact us at [2014thinktank@gmail.com](mailto:2014thinktank@gmail.com)**